



# A TASTE OF TASMANIAN SERENITY WITH BILL PEACH JOURNEYS

Sojourn Springtime in Tasmania

6 Days | 15 – 20 Nov 2020 | AUD\$5,750pp twin share | Single Supplement FREE\*

## EXCLUSIVE HIGHLIGHTS

- ✦ Spend 3 nights at the award winning Henry Jones Art Hotel, Australia's first dedicated art hotel
- ✦ Stay 2 nights at the luxurious Stewart Lodge, magnificently set on the Tasman Peninsula
- ✦ Cruise on board a sleek catamaran through the d'Entrecasteaux Channel to Peppermint Bay
- ✦ Take a fascinating tour of UNESCO World Heritage Site, Port Arthur, including a cruise of pristine Carnarvon Bay
- ✦ Touring of Hobart, Huonville and the world's largest privately-owned lavender farm
- ✦ Visit MONA, Australia's most contemporary art gallery
- ✦ All meals - breakfast, lunch and dinner
- ✦ Your own room with no single supplement charge
- ✦ Escorted throughout by a Journey Director

*"The fact that it was a singles group seemed to work very well, as we all had lots of fun and enjoyed the small group interaction."*

Daphne Townson, Brisbane, QLD

**B**ill Peach Journeys presents a springtime getaway exploring the spectacular scenery of the eastern coast of Tasmania. Blessed with endless natural beauty and colourful towns that capture the heritage of the island, Tasmania is the perfect place for a relaxing luxury retreat. We commence in the picturesque harbour city of Hobart staying 3 nights at the award winning Henry Jones Art Hotel, Australia's first dedicated art hotel. We celebrate Hobart's art scene at MONA, Australia's largest private museum and explore the stunning pastoral vistas of the Huon Valley. Cruise the pristine waters of the d'Entrecasteaux Channel spotting dolphins and seals on our way to Peppermint Bay. We will explore the serenity and scenic delights of the UNESCO World Heritage Site of Port Arthur and relax in the tranquillity of Stewarts Bay Lodge, set on 9 hectares of waterfront property. There will also be touring of Hobart, Huonville and the world's largest privately-owned lavender farm. All of this plus superb accommodation and exceptional local produce makes this a springtime Sojourn not to be missed!

## ABOUT SOJOURNS

Our Sojourn programmes are short break journeys put together in conjunction with themes, events or experiences.

These programmes range from exploring Australia's Top End to world class events and unique experiences throughout Australia and New Zealand.

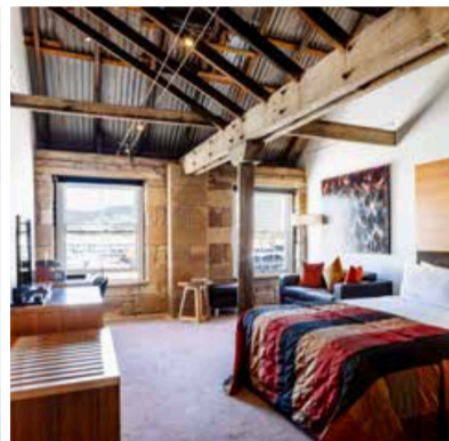
## FULLY INCLUSIVE

When you travel on a Sojourn with Bill Peach Journeys

everything is included and arranged before you even leave home. That includes all sundries like tips, taxes and transfers. In fact you won't even need to carry your bags.

Enjoy the finest level of accommodation, dining and service all in the one fare. From the very moment your journey begins, your seamless travel experience with Bill Peach Journeys begins.





#### DAY 1 | ARRIVE HOBART

Transfer from Hobart Airport to the award winning Henry Jones Art Hotel, Australia's first dedicated art hotel, a fusion of history and modernity, art and design. Enjoy the facilities of this remarkable hotel or explore this picturesque harbour city at your leisure. Your welcome dinner will be hosted by your Journey Director tonight, a perfect chance to meet your fellow travellers.

Overnight: Henry Jones Art Hotel or similar

#### DAY 2 | MONA

After breakfast this morning you will take a short stroll to Brook Street Ferry terminal for your 30 minute ferry ride to MONA travelling in the Mona Pit which gives you access to an exclusive lounge, bar and private deck. The Museum of Old and New Art is the largest privately funded museum in Australia, established within the Moorilla Winery on the Berriedale Peninsula in Hobart. The unconventional yet fascinating museum houses antiquities, modern and contemporary art from the David Walsh collection, as well as a diversity of exhibitions for you to explore as you wander the museum at leisure.

Overnight: Henry Jones Art Hotel or similar

#### DAY 3 | CRUISE & HUON VALLEY

This morning we board a luxury catamaran for outstanding views of Hobart city and the harbour as we cruise on the River Derwent then along the coast. As we enter the d'Entrecasteaux Channel, watch for dolphins and sleeping seals before cruising

south to the pristine waters of Peppermint Bay. Here we will enjoy a sumptuous meal of fresh local produce paired with delicious Tasmanian wines overlooking the picturesque Bruny Island. We return to Hobart through the fertile fruit orchards and farmland of the picturesque Huon Valley visiting a vineyard on the way.

Overnight: Henry Jones Art Hotel or similar

#### DAY 4 | HOBART - PORT ARTHUR

Today we tour Tasmania's capital city and discover an unsurpassed natural setting interwoven with a tangible sense of history. Lunch today is at Frogmore Creek Winery, acclaimed for their cool climate wines. Transfer this afternoon to Stewarts Bay Lodge, our accommodation for the next two evenings which is nestled between a beautiful beach, a forest, the calming ocean and a world heritage listed national park on the Tasman Peninsula.

Overnight: Stewarts Bay Lodge

#### DAY 5 | PORT ARTHUR

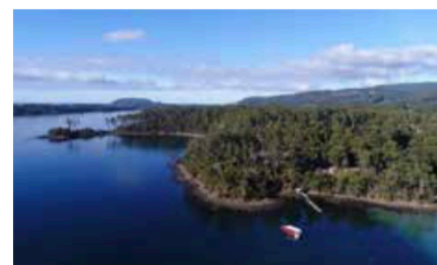
After breakfast at the lodge, we visit the world's largest privately-owned lavender farm, a true feast for all the senses. Next, we drive to the UNESCO World Heritage Site of Port Arthur for an introductory historical walking tour with our own private expert guide. We will have access to more than 30 buildings, ruins and restored houses, including the Convict Water Supply Trail, the new dockyard and the Coal Mines Historic Site at Saltwater River. To gain another perspective of

this incredible site, we will also cruise around serene Carnarvon Bay, taking in the architecture and ruins of this former convict settlement, the sombre history starkly contrasting with the beauty of the surrounding area. Return to the Lodge for our farewell dinner this evening.

Overnight: Stewarts Bay Lodge

#### DAY 6 | DEPART HOBART

After a leisurely breakfast, we transfer to Hobart airport. Saying a fond farewell to new friends, we take away memories of an enchanting springtime Sojourn in Tasmania.



Please contact Bill Peach Journeys or your local travel agent for assistance with airfares.

\*Conditions Apply: Single Supplement Free offer cannot be used in conjunction with any other offer.



For more information or to make a booking,  
call our Travel Specialists on 1300 766 537  
or email [info@cruiseexpress.com.au](mailto:info@cruiseexpress.com.au)

Travelations Pty Ltd t/a Cruise Express  
ABN 31095788177 ATAS A11029

