

GRAND  
S O U T H E R N L O O P

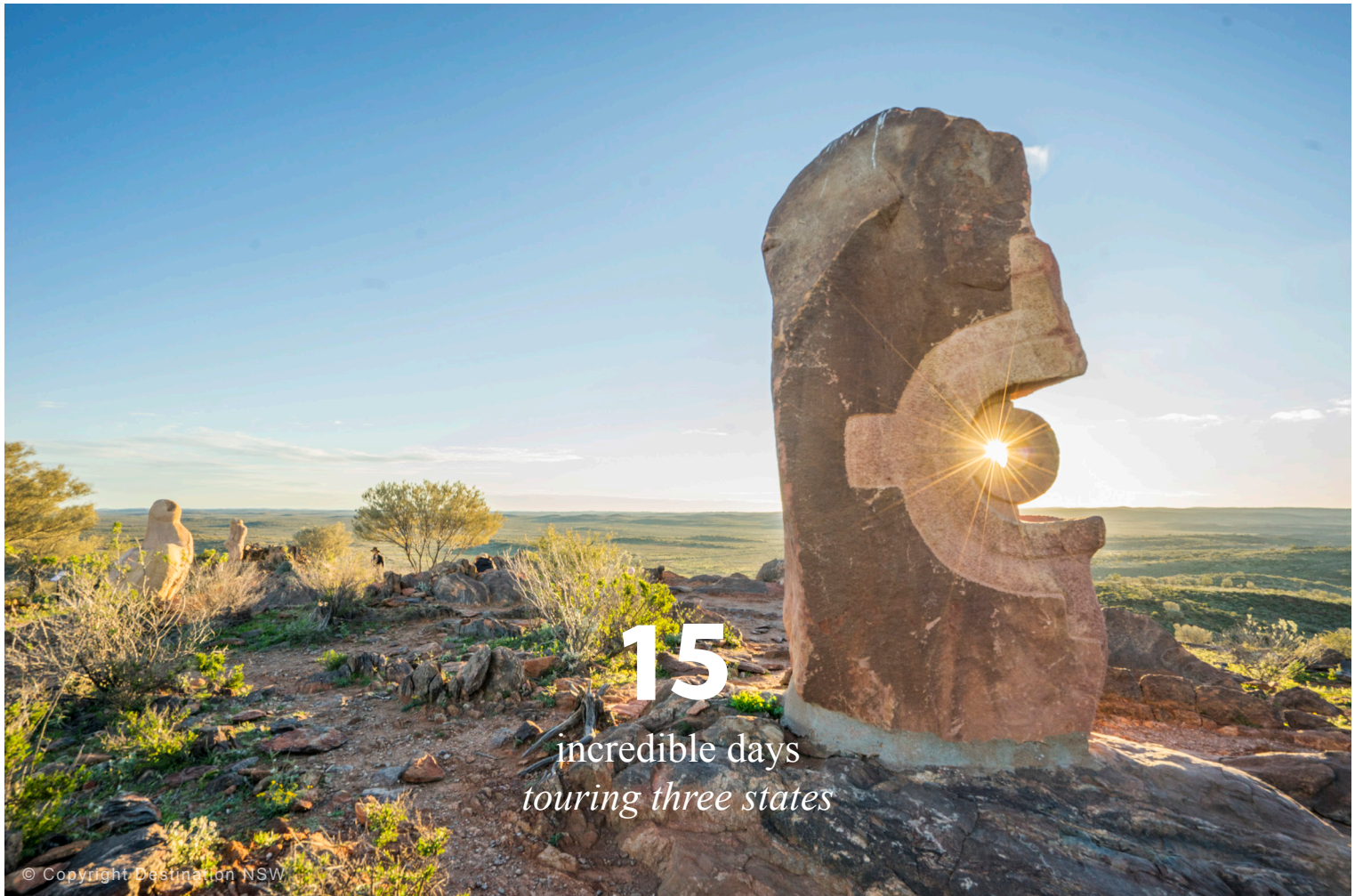
NEW SOUTH WALES    SOUTH AUSTRALIA    VICTORIA

— AUGUST 2022 —



from \$7,490\* pp





© Copyright Destination NSW

## INTRODUCTION

Welcome to the most epic heritage rail journey offered in two generations. This incredible tour aboard the 1961 built heritage railmotor 621/721 offers an unparalleled in-depth exploration of three states.

With a mixture of must see sights and exclusive experiences, you'll find virtually everything is included allowing you to relax and truly immerse yourself in each destination.

In several cases we will stop for two or three nights, allowing you to see more of each destination with free time to explore on your own.

From the vast outback of New South Wales and South Australia's Flinders Ranges to a thundering

steam train in the Bugle Ranges and the romance of an Edwardian mansion in the Victorian countryside, each day will bring new sights and experiences.

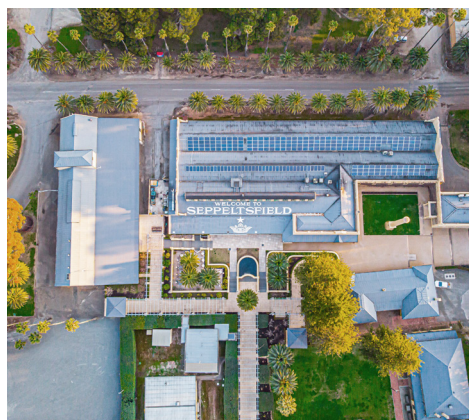
Everything is exclusive, meaning no crowds or queues. Even your luggage will be sent by road meaning there is no limit on the size of your bag.

Fully escorted by Cruise Express, this tour of all tours is one for the record books! We invite you to come with us and explore.

Welcome aboard!



© Copyright Galabs Rail Films



Top - Enjoy spectacular views from the **Living Desert & Sculptures** at Broken Hill

Above - the comfortable interior of heritage rail motor **621/721**

Far left - From Port Augusta, travel on the historic **Pichi Richi Railway** to Quorn in the Flinders Ranges

Left - Vist historic **Seppeltsfield Winery** in the Barossa Valley for a tour, wine tastings and lunch

# ITINERARY

----- August 2022

## SATURDAY 6TH

Board your heritage rail motor 621/721 at Sydney Terminal. Soon we will be rolling through the beautiful Blue Mountains enjoying the stunning views. Enjoy lunch onboard before a stop at Bathurst where there will be time to visit the nearby Rail Museum. Continuing on through ever changing countryside we will arrive in Parkes late afternoon. Tonight enjoy a welcome dinner and drinks at the historic Parkes Showground. Overnight: Local motels - **L,D**

## SUNDAY 7TH

Rejoining the rail motor we head west and away from main roads through small towns such as Condobolin and Euabalong West. Watch as the soil turns red and the countryside gives way to scrub. By lunchtime, we will arrive at the tiny outpost of Ivanhoe where we will take a short break to stretch our legs. Passing through Menindee we'll reach Broken Hill in the late afternoon. Tonight enjoy dinner at the iconic Palace Hotel with a Priscilla themed drag show. Overnight: Local motels - **B,L,D**

## MONDAY 8TH

Today we'll visit some of the iconic sights of Broken Hill such as the Line of Load Memorial, Sulphide Street Railway & Historical Museum, Pro Hart Gallery and the Living Desert and Sculptures. Take in the breathtaking views while enjoying sundowners at Mundi Mundi Plains Lookout followed by dinner at the Silverton Hotel. Overnight: Local motels - **B,L,D**

## TUESDAY 9TH

Today the rail motor passes through Cockburn into South Australia and will make a short stop at historic Manna Hill Station. Disembark at Peterborough and transfer to Steamtown Heritage Rail Centre for a tour and lunch. Returning to the train we'll pass through ever changing countryside as we head towards the rail junction at Crystal Brook where we'll call in at the local pub for an afternoon drink. After arriving at Port Augusta we'll transfer to our motel and enjoy dinner with fellow travellers. Overnight: Standpipe Motor Inn (or similar) - **B,L,D**

## WEDNESDAY 10TH

After breakfast transfer back to the station to board the historic Pichi Richi Railway. The line which opened in 1879 is part of the old Ghan route to Alice Springs and passes through the spectacular Pichi Richi Pass on its way to Quorn. This quaint town was once the junction of two railroads and retains many of its historic buildings. You have the opportunity to explore on your own or take a Brill Railmotor shuttle to the nearby rail yards to view the collection. Enjoy lunch at the Transcontinental Hotel then return by train to Port Augusta arriving late afternoon. Dinner tonight is at a local restaurant. Overnight: Standpipe Motor Inn (or similar) - **B,L,D**

## THURSDAY 11TH

Our rail motor journeys south today for a short run to Adelaide. Transfer to your hotel with the rest of the day at leisure. Rundle Mall is close by as is the Art Gallery and Museum. Tonight we will transfer to Largs Bay and enjoy dinner at Largs Pier Hotel, overlooking the St. Vincent Gulf. Return to our hotel late evening. Overnight: Ibis Adelaide (or similar) - **B,D**

## FRIDAY 12TH

Mid-morning we'll travel to the historic Seppeltsfield Winery. Seppeltsfield was established in the Barossa Valley by Joseph and Johanna Seppelt just 15 years after the European settlement of South Australia in 1850. Tour the winery then enjoy a food and wine pairing flight and lunch. Return to Adelaide with the rest of today at leisure. Overnight: Ibis Adelaide (or similar) - **B,L**

## SATURDAY 13TH

After breakfast transfer by coach to Mount Barker railway station. Board our Streamranger Heritage Railway privately chartered steam-hauled train for a thrilling journey to Victor Harbor. There is free time to explore and have lunch before returning to the train for the journey back to Mount Barker. Transfer to Mount Lofty for dinner at the spectacular Summit Cafe. Overnight: Ibis Adelaide (or similar) - **B,D**



Above - Former South Australian Railways steam locomotive 621 'Duke of Edinburgh' enroute from Mount Barker to Victor Harbor on the Steamranger Heritage Railway

## SUNDAY 14TH

Return to the station to rejoin 621/721. We will journey up through the Adelaide Hills then make a short stop at Murray Bridge to stretch our legs. Shortly after crossing into Victoria, we'll stop at historic Serviceton Station for lunch before continuing on to Stawell. Disembark and transfer by coach to Boroka Lookout for stunning views over The Grampians. Check in to our motel and enjoy dinner at a local restaurant. Overnight: Country Plaza Motor Inn Halls Gap - **B,L,D**

## MONDAY 15TH

This morning we will visit the nearby Halls Gap Zoo for a guided tour before transferring back to Stawell. The train today goes cross country and south towards Gheringhap before turning north again for Melbourne. 621/721 will arrive at Melbourne's Southern Cross Station late afternoon where we'll disembark and take a short stroll across the road to our hotel. Join us for dinner and drinks tonight at Saint & Rogue, a nearby local gastropub. Overnight: Batmans Hill on Collins - **B,L,D**

## TUESDAY 16TH

After breakfast join a private history and laneways walking tour of Melbourne with a refreshment stop. The rest of the day is at leisure. Overnight: Batmans Hill on Collins - **B**

## WEDNESDAY 17TH

This morning take the short walk to Southern Cross Station to board our private diesel-hauled heritage train to Geelong. Transfer by coach to Drysdale to board the historic Bellarine Railway for the scenic return journey. Travel by coach to Winchelsea where we'll visit the National Trust mansion Barwon Park for a tour and afternoon tea. Rejoin our train at the local station and return to Melbourne for our Gala Dinner at a surprise mystery location. Return to our hotel late evening. Overnight: Batmans Hill on Collins - **B,L,D**

## THURSDAY 18TH

Your morning is free. We will depart Melbourne after lunch and make a short stop at Seymour Station for afternoon tea in the dining room. Upon arrival in Albury, we'll transfer to our hotel for check in before drinks and dinner. Overnight: Atura Albury (or similar) - **B,D**

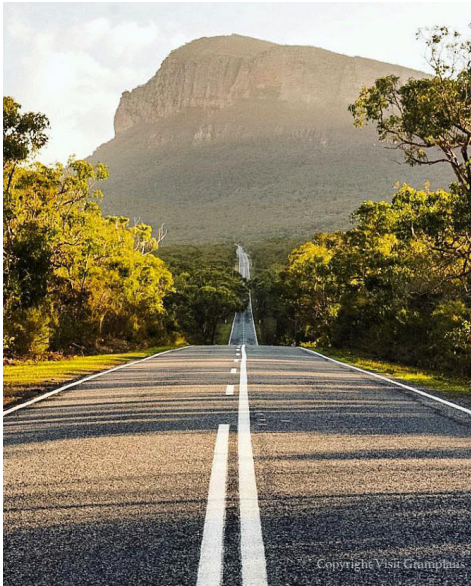
## FRIDAY 19TH

Leaving Albury we will soon pass Wagga Wagga and Junee before the rail motor climbs the unique Bethungra Spiral. We'll stop at historic Cootamundra West Station for lunch before travelling through the Cullerin Ranges to Goulburn. Disembark and transfer to your hotel. Join your fellow travellers for farewell drinks and our final dinner together. Overnight: Mercure Goulburn (or similar) - **B,L,D**

## SATURDAY 20TH

After breakfast return to the station for our last rail journey as the railmotor climbs through the beautiful Southern Highlands. We anticipate an early afternoon arrival at Sydney Terminal at the end of our epic adventure - **B,L**





Above - From Stawell, visit Boroka Lookout and overnight at **Halls Gap** in the spectacular Grampians National Park

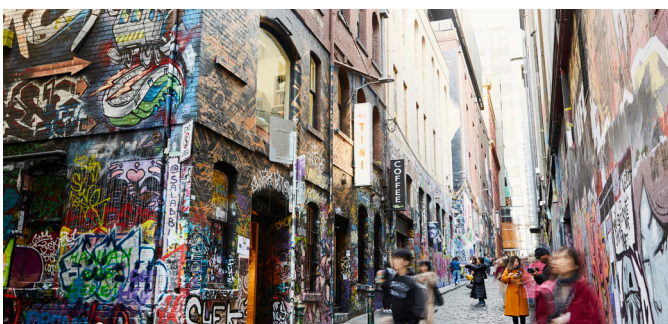
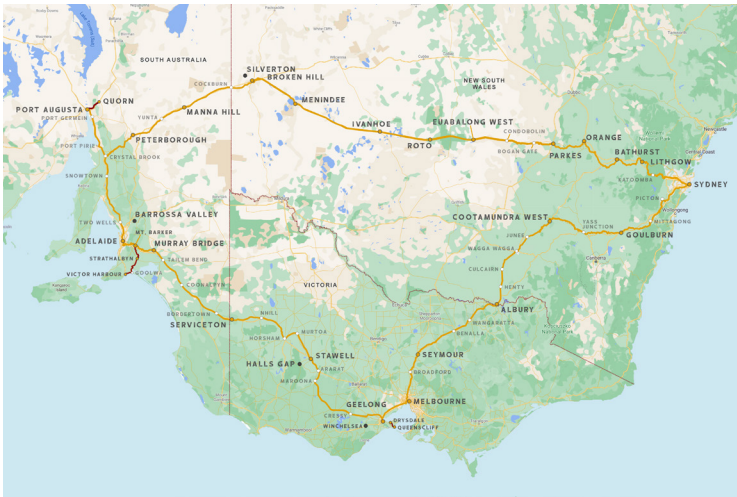


Left - Visit historic **Barwon Park** for afternoon tea. The 42 room mansion at Winchelsea was built by pioneer pastoralist Thomas Austin and his wife Elizabeth in 1871

## INCLUSIONS

15 days

- ✦ Daylight service aboard heritage rail motor 621/721 including refreshments and unlimited tea, coffee and water
- ✦ Convenient road transfers of all luggage
- ✦ Entry to the Bathurst Rail Museum
- ✦ 1 night Parkes accommodation at local motels with breakfast
- ✦ Welcome dinner in Parkes at a local restaurant
- ✦ Off train experience at Roto<sup>^</sup>
- ✦ 2 nights Broken Hill motel accommodation with breakfast daily
- ✦ Dinner and show at the iconic Palace Hotel
- ✦ Full day Broken Hill sightseeing tour including Line of Load Memorial and Sulphide Street Railway & Historical Museum
- ✦ Sundowners at the Mundi Mundi Plains Lookout
- ✦ Dinner at the Silverton Hotel
- ✦ Off train experience at historic Manna Hill Station<sup>^</sup>
- ✦ Visit the Steamtown Heritage Rail Centre at Peterborough with lunch
- ✦ Afternoon drinks at the Crystal Book Hotel<sup>^</sup>
- ✦ 2 nights Port Augusta accommodation at the Standpipe Motor Inn (or similar) with welcome dinner and breakfast daily
- ✦ Exclusive full day return diesel and steam heritage rail journey on the Pichi Richi Railway from Port Augusta to Quorn
- ✦ Lunch at the Transcontinental Hotel Quorn
- ✦ Dinner in Port Augusta at a local restaurant
- ✦ 3 nights Adelaide accommodation at the Ibis Adelaide (or similar) with breakfast daily
- ✦ Dinner at the Largs Pier Hotel with beverages
- ✦ Day tour to Seppeltsfield Winery in the Barossa Valley with tour, wine tastings and lunch with beverages
- ✦ Exclusive return steam-hauled heritage rail journey on the SteamRanger Heritage Railway from Mount Barker to Victor Harbor
- ✦ Dinner at the Summit Cafe at Mount Lofty
- ✦ Visit and tour of the historic Serviceton Station
- ✦ 1 night Halls Gap accommodation at the Country Plaza Motel (or similar) with breakfast
- ✦ Dinner at Flame Brothers Halls Gap with beverages
- ✦ 3 nights Melbourne accommodation at the Batmans Hill on Collins (or similar) with breakfast daily
- ✦ Dinner at Saint & Rogue on Little Collins Street
- ✦ Private laneways walking tour of Melbourne
- ✦ Exclusive return diesel-hauled heritage rail journey by Steamrail Victoria from Melbourne to Geelong and Winchelsea
- ✦ Exclusive return diesel-hauled heritage rail journey on the Bellarine Peninsular Railway from Drysdale to Queenscliff
- ✦ Picnic lunch at Queenscliff
- ✦ Visit the historic National Trust Barwon Park Mansion at Winchelsea with tour and afternoon tea
- ✦ Gala farewell dinner in Melbourne at a surprise location
- ✦ Afternoon tea at Seymour Railway Station
- ✦ 1 night Albury accommodation at the Atura Hotel (or similar) with welcome drinks, dinner and breakfast
- ✦ Lunch at the historic Cootamundra West Station
- ✦ 1 night Goulburn accommodation at the Mercure Goulburn (or similar) with dinner and breakfast
- ✦ Group coach transfers throughout
- ✦ Meals as indicated in the itinerary
- ✦ Cruise Express Tour Managers



Above - See **Melbourne** in an entirely different light with a small group walking tour taking in the history and laneways of this fascinating city

## FARES

**TWIN** from \$7,490\* pp

**SOLO** from \$8,490\* pp

