

FEDERAL CITY EXPRESS

SEPTEMBER 2022

RAIL
aboard the railmotors
CPH 1,3 & 7 to Canberra

TOURING
exclusive and bespoke
experiences in the ACT



 **Cruise**
EXPRESS

from \$1,690* per person

Itinerary

SEPTEMBER 2022

FRIDAY 16TH

Board the 1920's railmotors CPH 1,3 & 7 at Broadmeadow, Gosford or Sydney Terminal and travel through the Southern Highlands and Molonglo Gorge to Canberra. Transfer to your hotel and join us for welcome drinks before enjoying a relaxing free evening - **L**

SATURDAY 17TH

This morning you have free time to explore as you wish. Perhaps visit the springtime floral displays at Commonwealth Park. Early afternoon join your coach for a short orientation tour of Canberra. Take in the spectacular views from Mount Ainslie before a visit to the Australian War Memorial including the Last Post Ceremony. Tonight we enjoy dinner at the spectacular mid-century Shine Dome - **B,D**

SUNDAY 18TH

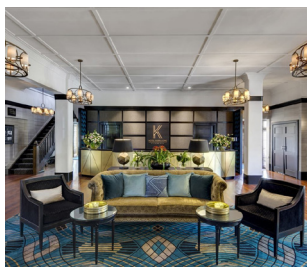
After breakfast we commence our touring of Canberra starting with a visit to the Australian National Gallery and National Portrait Gallery. Continue on to the Museum of Australian Democracy (Old Parliament House) and enjoy lunch and a private tour of select rooms. Our last stop for the day is the National Museum of Australia. Dinner tonight is at the delightful Poachers Pantry at Springrange - **B,L,D**

MONDAY 19TH

Reboard the railmotors and journey to Goulburn for a quick leg stretch before returning to Sydney, Gosford or Broadmeadow - **B,L**



CPH 1,3 & 7 are three of a class of 37 railmotors built in the 1920s. They provide a unique heritage rail experience with windows that open



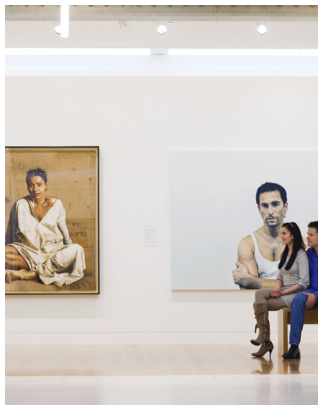
Stay three nights at the most historic of Canberra's hotels, The Hotel Kurrajong



Enjoy a private tour and lunch at the Museum of Australian Democracy at Old Parliament House



Our visit to the Australian War Memorial includes entrance to the Last Post Ceremony



Visit several must see sights such as the Australian National Gallery and National Portrait Gallery



Enjoy dinner at the unique mid-century Shine Dome

Inclusions

4 DAYS

- * Return daylight service from Broadmeadow, Gosford or Sydney Terminal to Canberra aboard the heritage railmotors CPH 1,3 & 7 including refreshments
- * Lunch aboard the railmotors in both directions
- * 3 nights Canberra accommodation at the Hotel Kurrajong with breakfast daily
- * Welcome drinks function
- * Free time to explore Canberra
- * City orientation tour with visit to Mount Ainslie Lookout
- * Visit the Australian War Memorial with entry to the Last Post Ceremony
- * Exclusive dinner at the mid-century Shine Dome with beverages
- * Visit the National Gallery of Australia and the National Portrait Gallery
- * Tour the Museum of Australian Democracy at Old Parliament House with an exclusive lunch
- * Visit the National Museum of Australia
- * Exclusive dinner at Poachers Pantry with beverages
- * Group coach transfers throughout
- * Meals as indicated in itinerary
- * Cruise Express Tour Managers#



Fares

TWIN from \$1,690* pp

SOLO from \$1,990* pp



1300 766 537

info@cruiseexpress.com.au

cruiseexpress.com.au/federal-city-express-sep-2022